

# LED Steplites

500 Series



2100E Series



280 Series



131 Series



600 Series



111 - 211 Series



C1392  
C1392D  
Series



121 Series



## Quick Reference Guide

Cole LED Steplites are equipped with high performance modules and integral drivers. Cole LED Steplites can be modified to fit almost any interior or exterior application.

Most models have exceptional durability provided by heavy-duty cast aluminum or stainless steel faceplates and tempered glass diffusers. Many Cole Steplites also feature a cast aluminum junction box which may be easily field mounted to either the back or bottom of the housing to best suit installation conditions.

Modified or custom Steplites may also be developed to meet your exact specifications.

To learn more about our custom capabilities and comprehensive range of standard lighting fixtures, call us directly or contact your local Cole representative.



**C.W. Cole & Company, Inc.**  
2560 Rosemead Boulevard  
South El Monte, CA 91733-1593

Tel. (626) 443-2473  
Fax (626) 443-9253  
info@colelighting.com  
[www.colelighting.com](http://www.colelighting.com)

## 111/211 SERIES

Low profile directional Steplites. Stainless steel or aluminum faceplate. Indoor and outdoor use.

Dimensions: H: 4-1/2", W: 2-1/2"

LED: 3000K CCT, CRI>80

DRIVER: integral

**3.15 watts, 450 lumens**



L111W-N



L211W-N-DUP/USB

## 153 SERIES

Compact Steplite. Cast aluminum faceplate. Powder coat steel housing. Indoor or outdoor use.

Dimensions: 4-1/2" Dia.

LED: 3000K CCT, CRI>80

DRIVER: integral

**3.15 watts, 450 lumens**



L153W



L153W-B

## 121 SERIES

Ultra compact Steplite. Stainless steel faceplate and housing. Frosted or opal tempered glass diffuser. Indoor or outdoor use.

Dimensions: 3" Sq., 3-3/8" Dia.

LED: 3000K CCT, CRI>80

DRIVER: integral

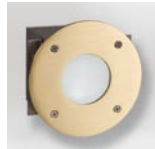
**3.15 watts, 450 lumens**



L121S-NH-OPL



L121S-OPL



L121RW-B



L121SW-2H-LVR

## 157 SERIES

Recessed or surface Steplites cast aluminum faceplate. Powder coat steel housing. Indoor and outdoor use.

Dimensions: H: 4-3/4", W: 7-7/8"

LED: 3000K CCT, CRI>80

DRIVER: integral

**1.5 watts, 126 lumens**

High Output

**3.4 watts, 331 lumens**

**6.8 watts, 662 lumens (H0-2)**

*Wattage and lumens are doubled for thru-wall models*



L157W-J



L157GW-J



SL157W



L157W-2S-SCL-BLK

## 131 SERIES

Compact directional Steplite. Cast aluminum cutoff eyelid or non eyelid faceplate. Powder coat steel housing. Indoor or outdoor use.

Dimensions: 3-1/2" Dia.

LED: 3000K CCT, CRI>80

DRIVER: integral

**3.15 watts, 450 lumens**



L131W-TP



L131W-ALU-TP



L131GW-ALU

## 141 SERIES

Low-profile directional aisle light. Cast aluminum cutoff hood faceplate. Powder coat steel housing. Indoor or outdoor use.

Dimensions: H: 3", W: 3-7/8"

LED: 3000K CCT, CRI>80

DRIVER: integral

**3.15 watts, 450 lumens**



L141-TP

## 158 SERIES

Brick size Steplites. Cast aluminum faceplate. Powder coat steel housing. Indoor and outdoor use.

Dimensions: H: 4", W: 8-1/2"

LED: 3000K CCT, CRI>80

DRIVER: integral

**1.5 watts, 126 lumens**

High Output

**3.4 watts, 331 lumens**

**6.8 watts, 662 lumens (H0-2)**



L158W-J



L158GW-J



L158W-N-J  
Stainless Steel



L158W-SCL-WHT-J  
Sharp Cut-off Louver

## 150 SERIES

Special purpose Steplites. Steel or stainless steel faceplates. Powder coat steel housings. Indoor use only.

Dimensions: see photo captions

LED: 3000K CCT, CRI>80

DRIVER: integral

**.75 watts, 63 lumens (L150H only)**

**3.15 watts, 450 lumens**



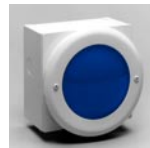
L150H-N  
2-5/8"x4-3/8"



L150E  
5-3/8" dia.



L150G-RED  
5-3/8" sq.



L150G/PA-BLU  
5-3/8" dia.

## 159 SERIES

Low profile step riser fixture. Cast aluminum faceplate. Powder coat steel housing. Indoor and outdoor use.

Dimensions: H: 2", W: 10"

LED: 3000K CCT, CRI>80

DRIVER: integral

**1.5 watts, 126 lumens**

High Output

**3.4 watts, 331 lumens**



L159W

## 180 SERIES

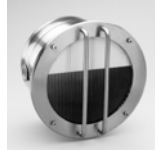
Large round spread lens Steplites. Spun stainless steel faceplate and housing. Flat or convex spread lense. Indoor and outdoor use.

Dimensions: 7" Dia.

LED: 3000K CCT, CRI>80

DRIVER: integral

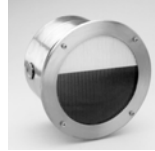
**9.45 watts, 1350 lumens**



L181VW



L181HW



L183W



L184W

## 252 SERIES

Versatile Steplites. Cast aluminum and stainless steel faceplates. Powder coat steel housings. Indoor and outdoor use.

Dimensions: see photo captions

LED: 3000K CCT, CRI>80

DRIVER: integral

**1.5 watts, 126 lumens**

High Output

**3.4 watts, 331 lumens**

**6.8 watts, 662 lumens (HO-2)**



L252W-L26-J  
5-5/8" x 9-3/8"



L252W-L26-V  
9-3/8" x 5-5/8"



L252-N Stainless Steel  
5-5/8" x 9-3/8"



L252-N-CO-J  
5-7/8" x 11-5/8"

## 280 SERIES

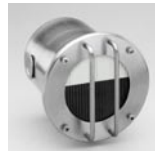
Small round spread lens Steplites. Spun stainless steel faceplate and housing. Indoor and outdoor use.

Dimensions: 4-1/2" Dia.

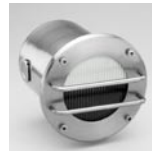
LED: 3000K CCT, CRI>80

DRIVER: integral

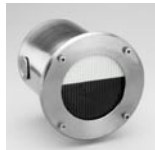
**3.15 watts, 450 lumens**



L285VW



L285HW



L286W



L287W

## 300 SERIES

Hybrid Steplite with door to enclose receptacles. Brass or aluminum faceplate. Powder coat steel housing. Indoor or outdoor use.

Dimensions: H: 13-1/4", W: 7-3/8"

LED: 3000K CCT, CRI>80

DRIVER: integral

**3.06 watts, 340 lumens**

High Output

**9.2 watts, 1020 lumens**



TLL300W-B



TLL300W

## 500 SERIES

Ultra low profile Steplites. Stainless steel faceplate and housing. Indoor and outdoor use.

Dimensions: see photo captions

LED: 3000K CCT, CRI>80

DRIVER: integral

**L503W - 1.5 watts, 126 lumens**

**L506W - 3.0 watts, 252 lumens**

**L509W - 4.5 watts, 377 lumens**

**L512W - 6.0 watts, 503 lumens**



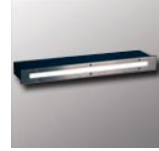
L503W  
1-9/16" x 6-3/4"



L506W  
1-9/16" x 9-3/4"



L509W  
1-9/16" x 12-3/4"



L512W  
1-9/16" x 15-3/4"

## 600 SERIES

Low profile directional Steplites. Stainless steel or aluminum faceplate. Indoor and outdoor use.

Dimensions: see photo captions

LED: 3000K CCT, CRI>80

DRIVER: integral

**L603W - 1.5 watts, 126 lumens**

**L603W-2S - wattage and lumens are doubled for thru-wall models**

**L606W - 3.0 watts, 252 lumens**

**L609W - 4.5 watts, 377 lumens**

**L612W - 6.0 watts, 503 lumens**

High Output

**L603W-HO - 3.2 watts, 331 lumens**

**L603W-2S-HO - wattage and lumens are doubled for thru-wall models**

**L606W-HO - 6.4 watts, 662 lumens**

**L609W-HO - 9.6 watts, 993 lumens**

**L612W-HO - 12.8 watts, 1323 lumens**



L603W-N 4"x5"



L606W-N 4"x8"



L609W-N 4"x11"



L612W-N 4"x14"



L603W-2S-N 4"x5"  
Thru-wall



SL603W-N 4"x5"  
Surface.  
Also available in:  
L606-L609-L612 sizes

## 2100 SERIES

Round or square Steplites. Cast aluminum faceplates. Powder coat steel housing. Indoor and outdoor use.

Dimensions: 9" Dia., or 9"Sq.

LED: 3000K CCT, CRI>80

DRIVER: integral

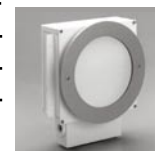
**9.45 watts, 1350 lumens**



L2100RW-J



L2100SW-J



L2100RGW-J



L2100SGW-J

## 2100E SERIES

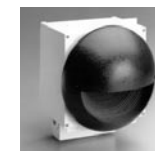
Dome style directional Steplite. Cast aluminum faceplate. Powder coat steel housing. Indoor and outdoor use.

Dimensions: 9-1/2" Dia.

LED: 3000K CCT, CRI>80

DRIVER: integral

**9.45 watts, 1350 lumens**



L2100EW

## LX2153/LX2153D SERIES

Large high performance Steplites. Cast aluminum faceplate. Powder coat steel housing. Indoor and outdoor use.

Dimensions: H: 7-13/16", W: 12"

LED: 3000K CCT, CRI>80

DRIVER: integral

**18 watts, 252 lumens**

High Output

**26 watts, 3400 lumens**

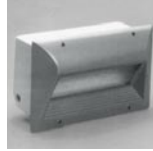
**37 watts, 4740 lumens (VHO)**



LX2153W-J



LX2153GW-J



LX2153DW

## 2500/2500-EGR SERIES

Low-level surface wall mounted fixture. Use as a Steplite or wall sconce. Uplight, downlight, or both. EGR Series is suitable above doorways, garage entries, elevators and other locations where emergency egress illumination is desired.

Dimensions: H: 5", W: 14-1/8", D: 4

Recessed housing for metal halide: H: 4-3/32", W: 13-11/16", D: 3-1/2"

LED: 3000K CCT, CRI>80

DRIVER: integral

**6.0 watts, 503 lumens per window**

High Output

**12.5 watts, 1323 lumens per window**

EGR

**9.45 watts, 1350 lumens + two 20MR11**



L2500W-1-ST  
FannyPack



L2500W-1-EGR  
FannyPack Egress

## 2156 SERIES

Large rectangular Steplites. Cast aluminum faceplates. Powder coat steel housings. Indoor and outdoor use.

Dimensions: H: 6", W: 13-1/2"

LED: 3000K CCT, CRI>80

DRIVER: integral

**4.5 watts, 377 lumens**

High Output

**9.2 watts, 993 lumens**

**18.3 watts, 1986 lumens (HO-2)**



L2156W-J



L2156GW-J



L2156VW-J



SL2156W

## 2600 SERIES

Large low-level surface wall mounted fixture. Use as a Steplite or wall sconce. Uplight, downlight, or both. Cast aluminum housing. Indoor and outdoor use.

Dimensions: H: 5", W: 20"

LED: 3000K CCT, CRI>80

DRIVER: integral

**9.0 watts, 755 lumens per window**

High Output

**18.6 watts, 1985 lumens per window**



L2600W-2-ST/ST  
FannyPack XL

## 2158 SERIES

Low-profile Steplites. Cast aluminum and stainless steel faceplates. Powder coat steel housing. Indoor and outdoor use.

Dimensions: H: 3", W: 13-1/4"

LED: 3000K CCT, CRI>80

DRIVER: integral

**4.5 watts, 377 lumens**

High Output

**9.6 watts, 993 lumens**



L2158W-J



L2158GW-J



L2158W-N-J  
Stainless Steel

## C1392/C1392D SERIES

Integrated Raillites. Stainless steel or aluminum construction. Indoor and outdoor use.

Dimensions: see photo captions

Lamp

LED: 3000K CCT, CRI>80

DRIVER: integral

**C1392 - 1.5 watts, 126 lumens**

**C1392 - 3.0 watts, 252 lumens**

**C1392D-LED-2 - 1.5 watts, 126 lumens**

**C1392D-LED-4 - 3.0 watts, 252 lumens**

High Output

**C1392-HO - 3.2 watts, 331 lumens**

**C1392-HO - 6.4 watts, 662 lumens (HO-2)**

**C1392D-LED-2-HO - 3.2 watts, 331 lumens**

**C1392D-LED-4-HO - 6.4 watts, 662 lumens**



C1392W-LED-2  
C1392W-LED  
Two sizes shown  
14-3/16" x 2",  
12-3/4" x 2"



C1392D-LED-2  
C1392D-LED-4  
2 and 4 window  
12-3/4" x 2",  
16-5/8" x 2"

## 2159/2159D SERIES

Low-profile rectangular Steplites. Cast aluminum faceplates. Powder coat steel housings. Indoor and outdoor use.

Dimensions: H: 4-1/2", W: 13-1/4"

LED: 3000K CCT, CRI>80

DRIVER: integral

**4.5 watts, 377 lumens**

High Output

**9.6 watts, 993 lumens**



L2159W-J



L2159GW-J



L2159DW-J-BLK

Indicated lumens are source lumens. Detailed product sheets with photometric data are available for the Steplites illustrated in this overview. [www.colelighting.com](http://www.colelighting.com)

C. W. Cole & Company, Inc. • 2560 Rosemead Boulevard • South El Monte, CA • 91733-1593 • Tel. (626) 443-2473 • Fax (626) 443-9253