

LED Steplites

500 Series



280 Series



131 Series



2100E Series



600 Series



111-211 Series



C1392
C1392D
Series



121 Series



Quick Reference Guide

Cole LED Steplites are equipped with high performance modules and integral drivers. Cole LED Steplites can be modified to fit almost any interior or exterior application.

Most models have exceptional durability provided by heavy-duty cast aluminum or stainless steel faceplates and tempered glass diffusers. Many Cole Steplites also feature a cast aluminum junction box which may be easily field mounted to either the back or bottom of the housing to best suit installation conditions.

Modified or custom Steplites may also be developed to meet your exact specifications.

To learn more about our custom capabilities and comprehensive range of standard lighting fixtures, call us directly or contact your local Cole representative.



C.W. Cole & Company, Inc.
2560 Rosemead Boulevard
South El Monte, CA 91733-1593

Tel. (626) 443-2473
Fax (626) 443-9253
info@colelighting.com
www.colelighting.com

111/211 SERIES

Low profile directional Steplites. Stainless steel or aluminum faceplate. Indoor and outdoor use.

Dimensions: H: 4-1/2", W: 2-1/2"

LED: 3000K CCT, CRI>80

DRIVER: integral

3.06 watts, 450 lumens



L111W-N



L211W-N-DUP/USB

153 SERIES

Compact Steplite. Cast aluminum faceplate. Powder coat steel housing. Indoor or outdoor use.

Dimensions: 4-1/2" Dia.

LED: 3000K CCT, CRI>80

DRIVER: integral

3.06 watts, 340 lumens



L153W



L153W-B

121 SERIES

Ultra compact Steplite. Stainless steel faceplate and housing. Frosted or opal tempered glass diffuser. Indoor or outdoor use.

Dimensions: 3" Sq., 3-3/8" Dia.

LED: 3000K CCT, CRI>80

DRIVER: integral

3.06 watts, 450 lumens



L121S-NH-OPL



L121S-OPL



L121RW-B



L121SW-2H-LVR

157 SERIES

Recessed or surface Steplites cast aluminum faceplate. Powder coat steel housing. Indoor and outdoor use.

Dimensions: H: 4-3/4", W: 7-7/8"

LED: 3000K CCT, CRI>80

DRIVER: integral

1.5 watts, 126 lumens

High Output

3.4 watts, 331 lumens

6.8 watts, 662 lumens (HO-2)

Wattage and lumens are doubled for thru-wall models



L157W-J



L157GW-J



SL157W



L157W-2S-SCL-BLK

131 SERIES

Compact directional Steplite. Cast aluminum cutoff eyelid faceplate. Powder coat steel housing. Indoor or outdoor use.

Dimensions: 3-1/2" Dia.

LED: 3000K CCT, CRI>80

DRIVER: integral

3.06 watts, 450 lumens



L131W-TP



L131W-ALU-TP

158 SERIES

Brick size Steplites. Cast aluminum faceplate. Powder coat steel housing. Indoor and outdoor use.

Dimensions: H: 4", W: 8-1/2"

LED: 3000K CCT, CRI>80

DRIVER: integral

1.5 watts, 126 lumens

High Output

3.4 watts, 331 lumens

6.8 watts, 662 lumens (HO-2)



L158W-J



L158GW-J



L158W-N-J
Stainless Steel



L158W-SCL-WHT-J
Sharp Cut-off Louver

141 SERIES

Low-profile directional aisle light. Cast aluminum cutoff hood faceplate. Powder coat steel housing. Indoor or outdoor use.

Dimensions: H: 3", W: 3-7/8"

LED: 3000K CCT, CRI>80

DRIVER: integral

3.06 watts, 450 lumens



L141-TP

150 SERIES

Special purpose Steplites. Steel or stainless steel faceplates. Powder coat steel housings. Indoor use only.

Dimensions: see photo captions

LED: 3000K CCT, CRI>80

DRIVER: integral

3.06 watts, 450 lumens (L150H only)

3.06 watts, 340 lumens



L150H-N
2-5/8"x4-3/8"



L150E
5-3/8" dia.



L150G-RED
5-3/8" sq.



L150G/PA-BLU
5-3/8" dia.

159 SERIES

Low profile step riser fixture. Cast aluminum faceplate. Powder coat steel housing. Indoor and outdoor use.

Dimensions: H: 2", W: 10"

LED: 3000K CCT, CRI>80

DRIVER: integral

1.5 watts, 126 lumens

High Output

3.4 watts, 331 lumens



L159W

180 SERIES

Large round spread lens Steplites. Spun stainless steel faceplate and housing. Flat or convex spread lense. Indoor and outdoor use.

Dimensions: 7" Dia.

LED: 3000K CCT, CRI>80

DRIVER: integral

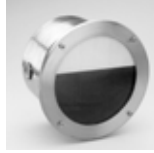
10.0 watts, 1020 lumens



L181VW



L181HW



L183W



L184W

252 SERIES

Versatile Steplites. Cast aluminum and stainless steel faceplates. Powder coat steel housings. Indoor and outdoor use.

Dimensions: see photo captions

LED: 3000K CCT, CRI>80

DRIVER: integral

1.5 watts, 126 lumens

High Output

3.4 watts, 331 lumens

6.8 watts, 662 lumens (H0-2)



L252W-L26-J
5-5/8" x 9-3/8"



L252W-L26V-J
9-3/8" x 5-5/8"



L252-N Stainless Steel
5-5/8" x 9-3/8"



L252-N-CO-J
5-7/8" x 11-5/8"

280 SERIES

Small round spread lens Steplites. Spun stainless steel faceplate and housing. Indoor and outdoor use.

Dimensions: 4-1/2" Dia.

LED: 3000K CCT, CRI>80

DRIVER: integral

3.06 watts, 450 lumens



L285VW



L285HW



L286W



L287W

300 SERIES

Hybrid Steplite with door to enclose receptacles. Brass or aluminum faceplate. Powder coat steel housing. Indoor or outdoor use.

Dimensions: H: 13-1/4", W: 7-3/8"

LED: 3000K CCT, CRI>80

DRIVER: integral

3.06 watts, 340 lumens

High Output

9.2 watts, 1020 lumens



TLL300W-B



TLL300W

500 SERIES

Ultra low profile Steplites. Stainless steel faceplate and housing. Indoor and outdoor use.

Dimensions: see photo captions

LED: 3000K CCT, CRI>80

DRIVER: integral

L503W - 1.5 watts, 126 lumens

L506W - 3.0 watts, 252 lumens

L509W - 4.5 watts, 377 lumens

L512W - 6.0 watts, 503 lumens



L503W
1-9/16" x 6-3/4"



L506W
1-9/16" x 9-3/4"



L509W
1-9/16" x 12-3/4"



L512W
1-9/16" x 15-3/4"

600 SERIES

Low profile directional Steplites. Stainless steel or aluminum faceplate. Indoor and outdoor use.

Dimensions: see photo captions

LED: 3000K CCT, CRI>80

DRIVER: integral

L603W - 1.5 watts, 126 lumens

L603W-2S- wattage and lumens are doubled for thru-wall models

L606W - 3.0 watts, 252 lumens

L609W - 4.5 watts, 377 lumens

L612W - 6.0 watts, 503 lumens

High Output

L603W - 3.4 watts, 331 lumens

L603W-2S-H0- wattage and lumens are doubled for thru-wall models

L606W - 6.9 watts, 662 lumens

L609W - 9.2 watts, 993 lumens

L612W - 12.2 watts, 1323 lumens



L603W-N 4"x5"



L606W-N 4"x8"



L609W-N 4"x11"



L612W-N 4"x14"



L603W-2S-N 4"x5"
Thru-wall



SL603W-N 4"x5"
Surface.
Also available in:
L606-L609-L612 sizes

2100 SERIES

Round or square Steplites. Cast aluminum faceplates. Powder coat steel housing. Indoor and outdoor use.

Dimensions: 9"Dia., or 9"Sq.

LED: 3000K CCT, CRI>80

DRIVER: integral

9.2 watts, 1020 lumens



L2100RW-J



L2100SW-J



L2100RGW-J



L2100SGW-J

2100E SERIES

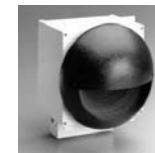
Dome style directional Steplite. Cast aluminum faceplate. Powder coat steel housing. Indoor and outdoor use.

Dimensions: 9-1/2"Dia.

LED: 3000K CCT, CRI>80

DRIVER: integral

9.2 watts, 1020 lumens



L2100EW

2153/2153D SERIES

Large high performance Steplites. Cast aluminum faceplate. Powder coat steel housing. Indoor and outdoor use.

Dimensions: H: 7-13/16", W: 12"

LED: 3000K CCT, CRI>80

DRIVER: integral

3.0 watts, 252 lumens

High Output

6.4 watts, 662 lumens

12.2 watts, 1323 lumens (HO-2)



L2153W-J



L2153GW-J



L2153DW

2500/2500-EGR SERIES

Low-level surface wall mounted fixture. Use as a Steplite or wall sconce. Uplight, downlight, or both. EGR Series is suitable above doorways, garage entries, elevators and other locations where emergency egress illumination is desired.

Dimensions: H: 5", W: 14-1/8", D: 4"

Recessed housing for metal halide: H: 4-3/32", W: 13-11/16", D: 3-1/2"

LED: 3000K CCT, CRI>80

DRIVER: integral

6.0 watts, 503 lumens per window

High Output

12.2 watts, 1323 lumens per window

EGR

9.2 watts, 1350 lumens + two 20MR11



L2500W-1-ST
FannyPack



L2500W-1-EGR
FannyPack Egress

2156 SERIES

Large rectangular Steplites. Cast aluminum faceplates. Powder coat steel housings. Indoor and outdoor use.

Dimensions: H: 6", W: 13-1/2"

LED: 3000K CCT, CRI>80

DRIVER: integral

4.5 watts, 377 lumens

High Output

9.2 watts, 993 lumens

18.3 watts, 1986 lumens (HO-2)



L2156W-J



L2156GW-J



L2156VW-J



SL2156W

2600 SERIES

Large low-level surface wall mounted fixture. Use as a Steplite or wall sconce. Uplight, downlight, or both. Cast aluminum housing. Indoor and outdoor use.

Dimensions: H: 5", W: 20"

LED: 3000K CCT, CRI>80

DRIVER: integral

9.0 watts, 755 lumens per window

High Output

18.6 watts, 1985 lumens per window



L2600W-2-ST/ST
FannyPack XL

2158 SERIES

Low-profile Steplites. Cast aluminum and stainless steel faceplates. Powder coat steel housing. Indoor and outdoor use.

Dimensions: H: 3", W: 13-1/4"

LED: 3000K CCT, CRI>80

DRIVER: integral

4.5 watts, 377 lumens

High Output

9.2 watts, 993 lumens



L2158W-J



L2158GW-J



L2158W-N-J
Stainless Steel

C1392/C1392D SERIES

Integrated Raillites. Stainless steel or aluminum construction. Indoor and outdoor use.

Dimensions: see photo captions

Lamp

LED: 3000K CCT, CRI>80

DRIVER: integral

C1392 - 1.5 watts, 126 lumens

C1392 - 3.0 watts, 252 lumens

C1392D-LED-2 - 1.5 watts, 126 lumens

C1392D-LED-4 - 3.0 watts, 252 lumens

High Output

C1392 - 3.2 watts, 331 lumens

C1392 - 6.4 watts, 662 lumens (HO-2)

C1392D-LED-2 - 3.2 watts, 331 lumens

C1392D-LED-4 - 6.4 watts, 662 lumens



C1392W-LED-2
C1392W-LED
Two sizes shown
14-3/16" x 2",
12-3/4" x 2"



C1392D-LED-2
C1392D-LED-4
2 and 4 window
12-3/4" x 2",
16-5/8" x 2"

2159/2159D SERIES

Low-profile rectangular Steplites. Cast aluminum faceplates. Powder coat steel housings. Indoor and outdoor use.

Dimensions: H: 4-1/2", W: 13-1/4"

LED: 3000K CCT, CRI>80

DRIVER: integral

4.5 watts, 377 lumens

High Output

9.6 watts, 993 lumens



L2159W-J



L2159GW-J



L2159DW-J-BLK

Indicated lumens are source lumens. Detailed product sheets with photometric data are available for the Steplites illustrated in this overview. www.colelighting.com

C. W. Cole & Company, Inc. • 2560 Rosemead Boulevard • South El Monte, CA • 91733-1593 • Tel. (626) 443-2473 • Fax (626) 443-9253