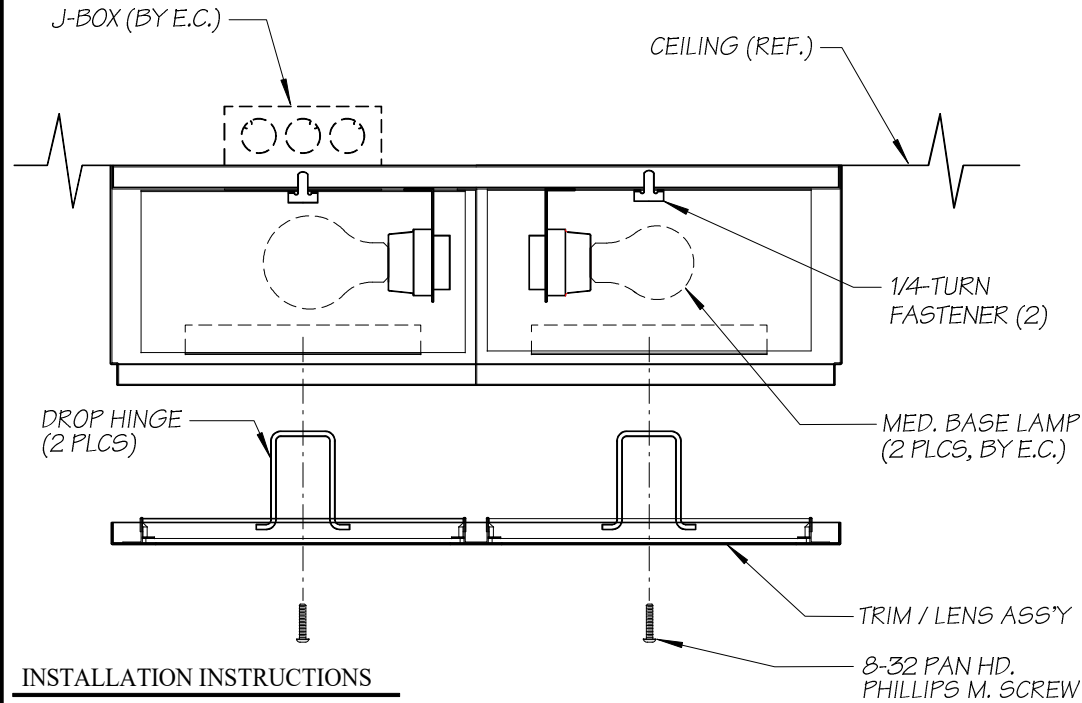


Installation Instruction Sheet

PH810-2S-DL



INSTALLATION INSTRUCTIONS

1. BE SURE POWER TO UNIT IS TURNED OFF
2. Remove trim / lens assemblies.
3. Remove reflectors to access feed wires and mounting holes.
4. Attach housing to ceiling using appropriate fasteners in the four (4) mounting holes.
5. Make wire splice connections with feed wires from j-box.
6. Install lamps (by E.C.) in sockets according to wattage limitations indicated in each compartment.
7. Pass wire drop hinges through slots in housing angles with open end downward.
8. Squeeze drop hinges and insert into bracket holes provided on trim.
9. Retain trim against bottom of fixture with 8-32 screws provided.

Note: If fixture is provided with distributing lens (-DL) in lieu of safelite filter in one compartment, be sure the lens is installed below the compartment marked for 150 watt lamp. Safelite filters are only to be below compartments marked for lamps of 15 watt maximum.

NOTE:

"THIS PRODUCT MUST BE INSTALLED IN ACCORDANCE WITH THE APPLICABLE INSTALLATION CODE BY A PERSON FAMILIAR WITH THE CONSTRUCTION AND OPERATION OF THE PRODUCT AND THE HAZARDS INVOLVED".

REVISIONS

COLE
Lighting

2560 N. Rosemead Blvd. So. El Monte, CA 91733 . (626) 443-2473 . Fax: (626) 443-9253