

## Illuminated Handrails

### GUARDRAIL

Cole Lightrail systems are versatile and functional illuminated handrails, suitable for interior or exterior guardrails and stair or ramp railings. Guardrail projects light where it is needed and is available with asymmetrical or symmetrical light distribution patterns. Rail may be wall or post mounted, or it may be provided to coordinate with a handrailing system by another manufacturer. Matching non-illuminated railings are also offered for each series. The Cole illuminated rail is specifically designed and fabricated for every installation, and is listed as Suitable for Wet Locations by Underwriters Laboratories, Inc..

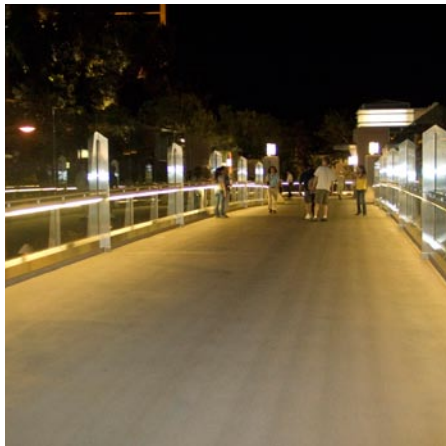
Cole guardrails are designed and engineered to withstand the abuse of most public areas. Design features comply with the Americans with Disabilities Act (ADA) requirements and other applicable codes. The high impact acrylic lenses are housed within thick heavy extruded aluminum rails. All rails are welded at mitered intersections for additional strength and durability.

We will also develop modified or custom illuminated railings to your exact specifications.

To learn more about our custom capabilities and comprehensive range of standard lighting fixtures, call us directly or contact your local Cole representative.

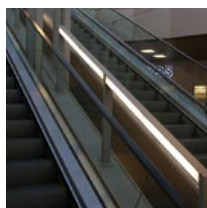


*Main Street Bridge,  
Columbus, OH*



In addition to our two standard series of illuminated rail, Cole can design and fabricate unique custom railings to suit your project requirements.

Lighted rails provide subtle illumination where it is needed without distracting from other architectural features.



Lighted rail with its many options and design flexibility can accommodate unusual applications.



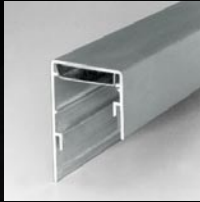
**C.W. Cole & Company, Inc.**  
2560 Rosemead Boulevard  
South El Monte, CA 91733-1593

Tel. (626) 443-2473  
Fax (626) 443-9253  
info@colelighting.com  
[www.colelighting.com](http://www.colelighting.com)

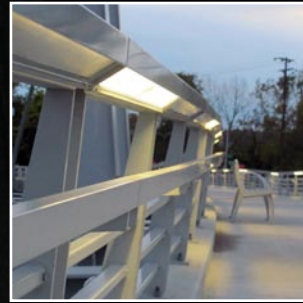
# GUARDRAILS

## LR1 LR 1W Wall Mounted LR 1P Post Mounted

The LR1 Series' aluminum extrusion's profile offers excellent asymmetric performance characteristics for both LED and fluorescent sources. A special acrylic prismatic lens optimizes performance across a wide path, such as a pedestrian bridge, while minimizing glare to the eyes.



LR1 rails are available for post and wall mount installations, as well as customized mounting to structures such as existing guard rails. Illumination is provided by a choice of high performance LEDs or T5 fluorescent lamps. Drivers and ballasts are located within the rail, above the light source. The full array of RAL powders are offered, as well as special coatings and anodizing. LR1 is UL/cUL listed, suitable for use in wet locations.



*Main Street Bridge,  
Columbus, OH*



*Pedestrian Bridge,  
Las Vegas, NV*



## LR3 LR 3W Wall Mounted LR 3P Post Mounted

The LR3 Series' 3 1/2" diameter cross-section offers an alternative appearance to the LR1's angular design. Available with both symmetric and asymmetric performance characteristics, LR3 offers significant flexibility. The wrap-around acrylic prismatic lens provides exceptional performance while minimizing glare to the eyes.



LR3 rails are available for post and wall mount installations, as well as customized mounting to most any structure. Illumination is provided by a choice of high performance LEDs or T5 fluorescent lamps. Drivers and ballasts are located within the rail, above the light source. The full array of RAL powders are offered, as well as special coatings and anodizing. LR3 is UL/cUL listed, suitable for use in wet locations.



*Main Place Mall,  
Santa Ana, CA*

