

Steplites

Series	LED colors	Diffuser color	Shielding	Feed-Thru	Exterior	Interior	Dimming	Other Options
L180	●	●	●	●	●	●	●	Faceplate finishes Shielding

L180 SERIES

Description

The L180 Series of Steplites offers a stylish means for low level walkway illumination. The satin or polished metal finishes add a premium quality appearance and the ribbed lens provides a jewel-like sparkle. The rugged construction, engineering excellence, and quality make these fixtures ideal for specification in most public areas.

Features

The lens design spreads light to the sides while the internal optical design keeps the focus directed downward. Optional guards add physical protection as well as a striking visual feature. The integral power supply keeps installation simple.

Applications

The 180 Series Steplites are suitable for concrete pour/block wall and stud wall mounting in indoor or outdoor installations. The L180 Series are suitable for all types of wall construction. All models are ideal in walls, ramps, and stairwells.

Custom

If your project demands a special fixture we would be pleased to discuss the production of modified standard fixtures or custom fixtures to suit your specific conditions. For more information on our custom capabilities, please contact your local Cole representative.



L181VW — Vertical lens guard



L181HW — Horizontal lens guard



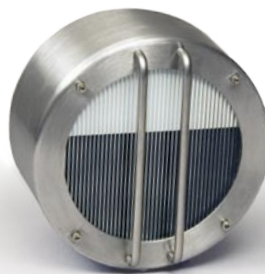
L183W-B-BCS — Satin brass finish & screws



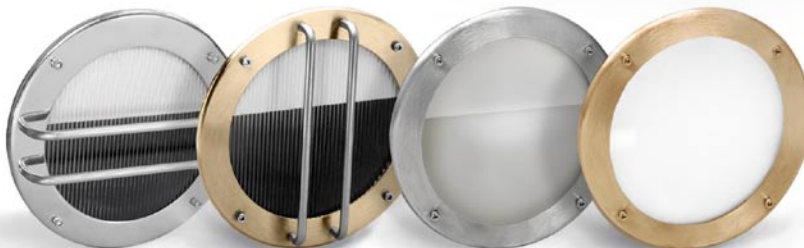
L184W — Convex spread lens

L180 Series Steplites are available with a choice of faceplate finishes, guard orientation, lenses and cap screws.

Surface
SL180
steplites
series.



Optional Faceplates and Diffusers



L181HW-PSS —
Polished Stainless Steel
with Horizontal guard

L181VW-SBR —
Satin Brass trim & stainless
steel Horizontal guard

L183W-FG —
Standard trim with
Frosted lens

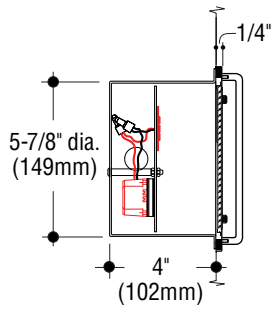
L183W-SBR-BCS-OPL —
Satin Brass trim and screws
with Opal lens

COLE
Lighting

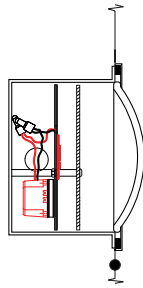
C.W. Cole & Company, Inc.
2560 Rosemead Boulevard
South El Monte, CA 91733-1593

Tel. (626) 443-2473
Fax (626) 443-9253
info@colelighting.com
www.colelighting.com

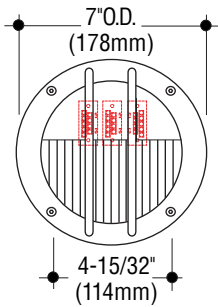
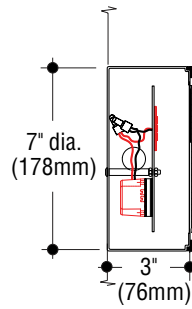
Vertical Guard



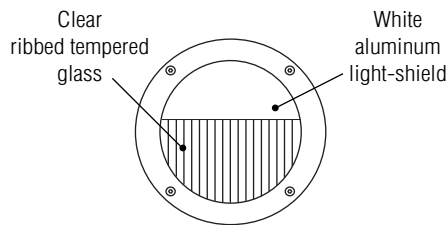
Convex Lens



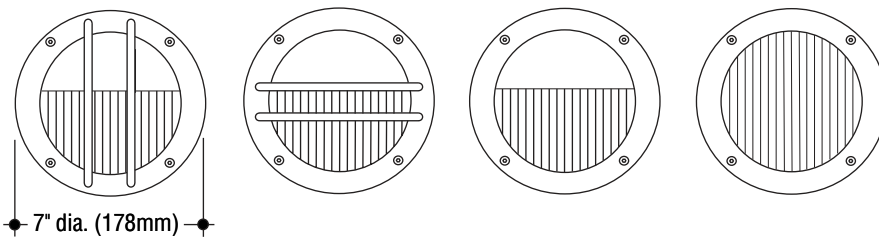
Surface with No-Guard



Flat spread lens featured on 181 and 183



Lens guard, non-guard and convex



Steplites

L180 SERIES

SPECIFICATIONS

Construction

- Housing is spun 16 gauge stainless steel
- Trim is spun 18 gauge satin finished stainless steel, gasketed and retained by four stainless steel tamperproof screws
- Stainless steel faceplates are passivated for superior rust resistance
- Spread lens is vertically ribbed tempered glass set in silicone sealant
- cETLus listed for wet locations in any wall construction
- All models suitable for concrete pour.

Electrical

- Fixture is wired with high performance LEDs, available in a variety of colors
- Integral driver is universal voltage; optional 0-10v dimming driver available
- One 1/2" conduit knockout provided on each side of housing. Suitable for 4 wire thru-wiring, 2 in 2 out

Mounting

Housing has flange with holes for mounting.

Catalog Number Lamp	Flat spread lens/ Vertical Guard	Flat spread lens/ Horizontal Guard	Flat spread lens/ Without Guard	Convex spread lens
LED 9.45W, (1350 lm @ 3000°K) Surface Housing	L181VW SL181VW	L181HW SL181HW	L183W SL183W	L184W SL184W

Lumens shown are source.

Photometric data available for Steplites can be downloaded at: <https://www.colelighting.com/photometrics>

Options

Faceplate finishes:

Polished stainless steel trim. Add suffix **-PSS**.

Satin brass trim (with stainless steel guard on 181 models). Add suffix **-SBR**

Brass screws: Hex-drive brass socket cap screws. Add suffix **-BCS**

Opal glass diffuser: Tempered, omits light-shield. Add suffix **-OPL**.

Frosted glass diffuser: Tempered. Add suffix **-FG**.

Dimming: Universal voltage, 0-10V driver. Add suffix **-DIM**.

LED colors:

4000°K: (1410 lm). Add suffix **-4K**.

Blue: Add suffix **-BLU**.

Amber:

Amber. Add suffix **-AMB**;

Amber 590nm (FWC compliant).

Add suffix **-AMB/590**.

How to Specify

1. Select catalog number with desired features.
2. Add suffixes for options required to meet job conditions.

COLE
Lighting

C.W. Cole & Company, Inc.
2560 Rosemead Boulevard
South El Monte, CA 91733-1593

Tel. (626) 443-2473

Fax (626) 443-9253

info@colelighting.com

www.colelighting.com